

FC:

target:	GEPRC_F722_AIO
MCU:	STM32F722RET6
IMU:	ICM 42688-P
BLACKBOX:	16MB
Baro:	YES
BEC:	5V 3A
Size:	35.0mm x 34.3mm
Install hole:	25.5mm x 25.5mm
Input Voltage:	2-6S LiPo
Uart:	5 Set

ESC:

Continuous Current:	45A
Burst Current:	50A(5S)
Input Voltage:	2-6S (8.4-25.2V)
Firmwar:	BLHeli32

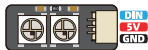


Buzzer&LED:

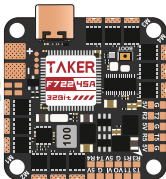
GEPRC Super Buzzer



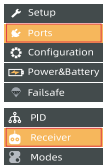
BUZZER



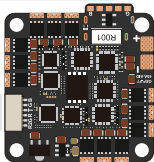
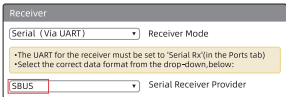
LED



DJI FPV Digital System:

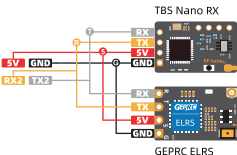
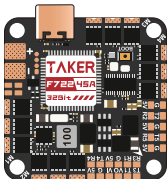


Identifier	Configuration/MSP	Serial RX
USB VCP	<input checked="" type="checkbox"/> 115200 ▼	<input type="checkbox"/>
UART1	<input checked="" type="checkbox"/> 115200 ▼	<input type="checkbox"/>
UART2	<input type="checkbox"/> 115200 ▼	<input checked="" type="checkbox"/>



If using an external receiver, disconnect this line

Receiver: (TBS Nano RX/ELRS)



- Setup
- Ports
- Configuration
- Power&Battery
- Failsafe

Identifier	Configuration/MSP	Receiver
USB VCP	<input checked="" type="checkbox"/> 115200 ▼	<input type="checkbox"/>
UART1	<input type="checkbox"/> 115200 ▼	<input type="checkbox"/>
UART2	<input type="checkbox"/> 115208 ▼	<input checked="" type="checkbox"/>

- PID
- Receiver
- Modes

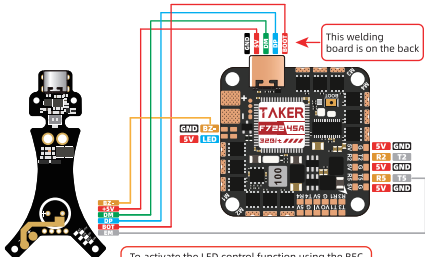
Receiver

Serial(via UART) ▼ Receiver Mode

The UART for the receiver must be set to "Serial Rx"(in the Ports tab)
Select the correct data format from the drop-down,below:

CRSF ▼ Serial Receiver Provider

CineLog30 V3 Custom Feature Edition:



To activate the LED control function using the BEC on the EM pin, flash this configuration:

```
resource SERIAL TX 5 none
resource PINIO 2 C12
set pinio config = 129,1,1
set pinio box = 39,40,41,42
save
```

Then, open the "Modes" tab and enable the channel switch



GPS:

Setup

Ports

Configuration

Power&Battery

Failsafe

Identifier		Sensor Input	
USB VCP		Disabled ▾	AUTO ▾
UART1		Disabled ▾	AUTO ▾
UART2		Disabled ▾	AUTO ▾
.....	 ▾ ▾
UART4→	GPS ▾	115200 ▾

Setup

Ports

Configuration

Power&Battery

Failsafe

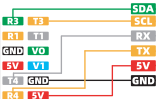
GPS GPS for navigation and telemetry

UBLOX protocol

Auto Baud

Auto Config

Set Home Point Once



LED Setup:

- Setup
- Ports
- Configuration**
- Power&Battery
- Failsafe

Other Features

- SERVO_TILT
- SOFTSERIAL
- SONAR
- TELEMETRY
- LED_STRIP

- Servo gimbal
- Enable CPU based serial ports
- sonar
- Telemetry output
- Multi-color RGB LED strip support

- Motors
- VideoTransmitter
- LED Strip**
- Sensors
- Tethered Logging

LED Strip Wiring

Wire Ordering Mode

Clear selected

Clear ALL Wiring



Choose a color for each LED

LED Functions

Function

Color modifier Blink Blink always

Larson scanner

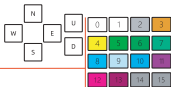
Overlay

Warnings

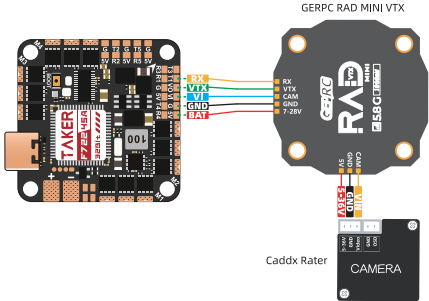
Indicator

VTX (uses vtx frequency to assign color)

LED Orientation: ('Modes&Orientaion') and Color

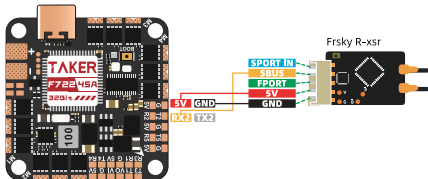


Analog VTX:



Setup	Identifier	Configuration/MSP	Peripherals
Ports	USB VCP	<input type="checkbox"/> 115200	Disabled AUTO
Configuration	UART1	<input checked="" type="checkbox"/> 115200	→	VTX(IRC Tramp) AUTO
	UART2	<input type="checkbox"/> 115200	Disabled AUTO

Receiver: (Frsky R-xsr)



- Setup
- Ports**
- Configuration
- Power&Battery
- Failsafe

Identifier	Configuration/MSP	Receiver
USB VCP	<input checked="" type="checkbox"/> 115200 ▼	<input type="checkbox"/>
UART1	<input type="checkbox"/> 115200 ▼	<input type="checkbox"/>
UART2	<input type="checkbox"/> 115200 ▼	<input checked="" type="checkbox"/>

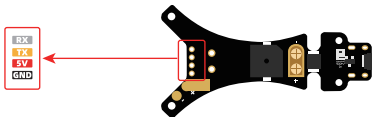
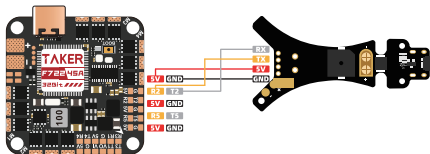
- PID
- Receiver**
- Modes

Receiver

Serial(via UART) ▼ Receiver Mode

The UART for the receiver must be set to 'Serial Rx'(in the Ports tab)
Select the correct data format from the drop-down,below:

SBUS ▼ Serial Receiver Provider



CAUTION:

- 1 Aircraft of 3 inches or more need to install a capacitor, which is included in the package.
 - 2 All wires should try to avoid the gyroscope, so as not to affect the normal work of the gyroscope.
 - 3 After soldering, please check that all connections are correct to avoid damage after power-on.
-

facebook



facebook.com/geprc

Official
website



www.geprc.com

Instagram



instagram.com/geprc

You  Tube



youtube.com/geprc

Manual



geprc.com/support

飞控参数

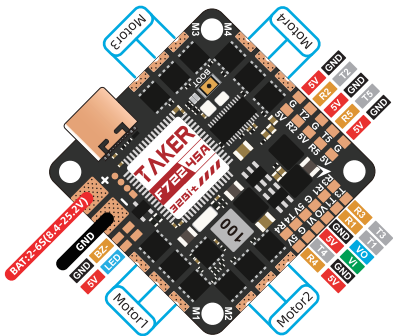
固件目标:	GPRC_F722_AIO
主控:	STM32F722RET6
陀螺仪:	ICM 42688-P
黑匣子:	16MB板载闪存
气压计:	YES
BEC 5V:	3A
最大外尺寸:	35.0mm x 34.3mm
安装孔位:	25.5mm x 25.5mm
输入电压:	2-6S
Uart串口:	5个

电调参数

持续电流:	45A
瞬间电流:	50A(5S)
支持电池:	2-6s (8.4-25.2V)
固件:	BLHeli32



接口定义：



蜂鸣器&LED:

GEPRC 超級蜂鸣器

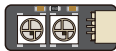
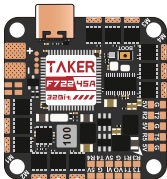


BZ-
5V
GND

蜂鸣器



GND BZ-
5V LED



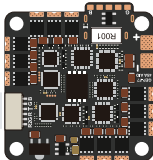
DIN
5V
GND

LED灯带

DJI 数字图传：

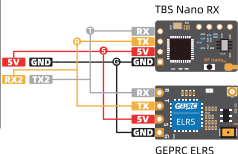
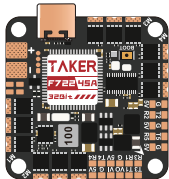


标识符	设置/MSP	串行数字接收机
USB VCP	<input checked="" type="checkbox"/> 115200 ▾	<input type="checkbox"/>
UART1	<input checked="" type="checkbox"/> 115200 ▾	<input type="checkbox"/>
UART2	<input type="checkbox"/> 115200 ▾	<input checked="" type="checkbox"/>



如果使用外置接收机，请断开此线

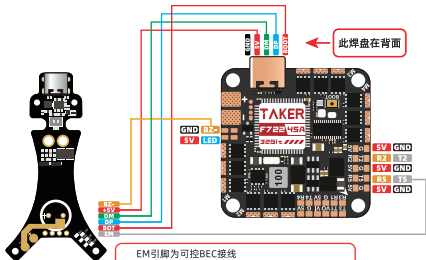
接收机:(TBS Nano RX/ELRS)



设置	标识符	设置/MSP	串行数字接收机
端口	USB VCP	<input checked="" type="checkbox"/> 115200 ▼	<input type="checkbox"/>
配置	UART1	<input type="checkbox"/> 115200 ▼	<input type="checkbox"/>
动力&电池	UART2	<input type="checkbox"/> 115200 ▼	<input checked="" type="checkbox"/>
失控保护			

PID调校	接收机
接收机	<div style="border: 1px solid red; padding: 2px;"> 串行接收机(通过UART) </div> 接收机模式
模式	注意: 使用串行接收机时, 请选择串行接收机类型, 并在串口页面设置相应的串口
	<div style="border: 1px solid red; padding: 2px;"> CRSF </div> 串行数字接收机协议

Cinelog30 V3 专用功能板



EM引脚为可控BEC接线
想实现可控BEC开关灯带功能需要刷入此代码：
resource SERIAL TX 5 none
resource PINIO 2 C12
set pinio config = 129,1,1
set pinio box = 39,40,41,42
save

刷了此代码后，“模式”界面打开此通道开关即可



GPS:



标识符		传感器输入	
USB VCP		已禁用	AUTO
UART1		已禁用	AUTO
UART2		已禁用	AUTO
.....	
UART4→	GPS	115200



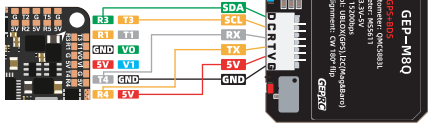
GPS 启用GPS导航

UBLOX 协议

自动波特率

自动设置

设置单次返航点



外置LED设置:

设置

端口

配置

动力&电池

失控保护

其他功能

SERVO_TILT

舵机云台

SOFTSERIAL

应用软串口

SONAR

声呐

TELEMERY

遥测输出

LED_STRIP

彩色RGB LED灯带

电机

图传

LED设置

传感器

日志

LED Strip Wiring

布线模式

清除已选定

清除所有布线



给每个LED选择一个颜色

LED 功能

基本功能

颜色修改器

闪烁

油门

持续闪烁

左右扫描

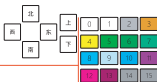
叠加功能

警告

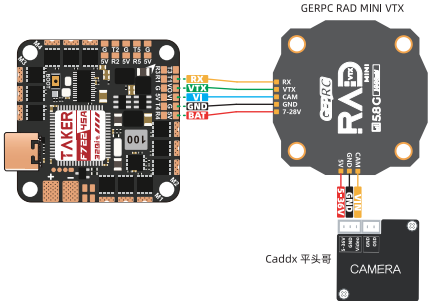
指示灯

图传 (根据图传频率而变化)

LED方向 ('模式和方向') 和颜色

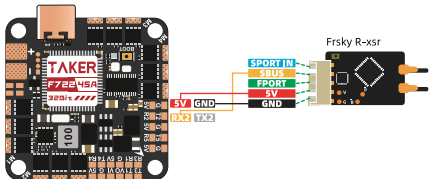


模拟图传：



设置	标识符	设置/MSP	外设
端口	USB VCP	<input checked="" type="checkbox"/> 115200 ▾	已禁用 ▾ AUTO ▾
配置	UART1	<input checked="" type="checkbox"/> 115208 ▾	VTX(IRC Tramp) ▾ AUTO ▾
	UART2	<input type="checkbox"/> 115200 ▾	已禁用 ▾ AUTO ▾

接收机:(Frsky R-xsr)



标识符	设置/MSP	串行数字接收机
USB VCP	<input checked="" type="checkbox"/> 115200 ▼	<input type="checkbox"/>
UART1	<input type="checkbox"/> 115200 ▼	<input type="checkbox"/>
UART2	<input type="checkbox"/> 115200 ▼	<input checked="" type="checkbox"/>

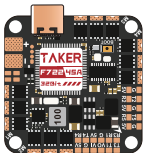


接收机

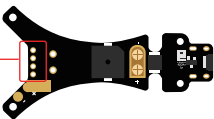
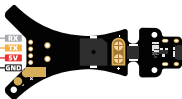
串行接收机(通过UART) 接收机模式

注意: 使用串行接收机时, 请选择串行接收机类型, 并在串口页面设置相应的串口

SBUS 串行数字接收机协议



- 5V GND
- R2 T2
- 5V GND
- R5 T5
- 5V GND



注意事项:

- 1 3寸及3寸以上的飞行器需要安装电容，包装内附带了一颗。
 - 2 焊接的电线尽量避开陀螺仪，以免影响陀螺仪正常工作。
 - 3 装机后请仔细检查连线是否正确，保持飞控整体干净 无多余焊锡残留。
-

格普官方QQ群: 499699918

格普官方微信:



wechat

格普淘宝:



geprc.taobao.com

格普官网:



www.geprc.com