

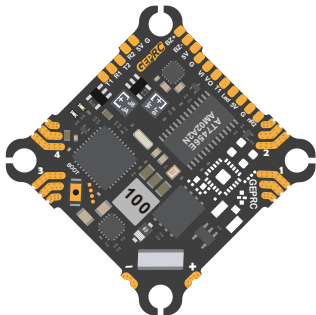
TAKER F411 12A AIO

CF:F411
ESC:Bluejay_12A

GEPRC

Includes:

Model Name:	TAKER F411 12A AIO
MCU:	STM32F411
GYRO:	ICM-42688-P
Firmware target:	GEPRC_F411_AIO
OSD:	AT7456E
Currebt:	YES
Beeper:	YES
LED:	YES
Black box:	16MB
USB:	micro USB
BEC 5V:	5V@2.5A
ESC MCU:	8BB21F16G
Continuous current:	12A
MAX current:	13A (10s)
Input voltage:	2-4S LiPo
Supports:	Dshot300,Oneshot,Multishot
ESC Traget:	G H 30
Size:	31.2x31.2mm
Mounting Holes:	25.5x25.5mm(M2)
Weight:	7g



DJI Digital Video Transmission System:

Identifier		Serial RX
USB VCP	<input checked="" type="checkbox"/> 115200 ▾	<input type="checkbox"/>
UART1	<input checked="" type="checkbox"/> 115200 ▾	<input type="checkbox"/>
UART2	<input type="checkbox"/> 115200 ▾	<input checked="" type="checkbox"/>

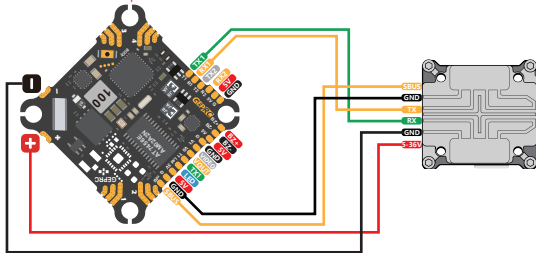
Receiver

Serial(via UART) ▾ Receiver Mode

The UART for the receiver must be set to 'Serial Rx'(in the Ports tab)
Select the correct data format from the drop-down,below.

SBUS ▾ Serial Receiver Provider

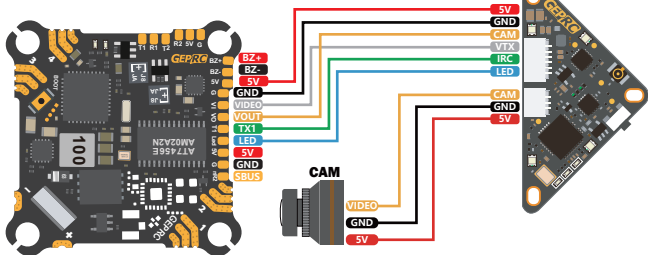
When using the BAT interface to power the image transmission, make sure that your battery voltage is within the required voltage range to avoid damage to the video transmission due to overvoltage, or connect an external BEC to power the video transmission



Analog VTX :

Identifier	Configuration/MSP	Peripherals	
USB VCP	<input checked="" type="checkbox"/> 115200 ▾	Disabled ▾	AUTO ▾
UART1	<input type="checkbox"/> 115200 ▾	VTX,IRC Tamp ▾	AUTO ▾
UART2	<input type="checkbox"/> 115200 ▾	Disabled ▾	AUTO ▾

Other Features	
<input checked="" type="checkbox"/>	AIRMODE
<input checked="" type="checkbox"/>	OSD
<input type="checkbox"/>	DYNAMIC_FILTER



Receiver (TBS NanoRX) :

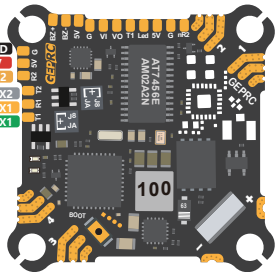
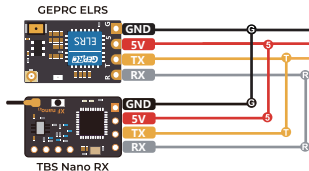
Identifier	Configuration/MSP	Serial RX
USB VCP	<input checked="" type="checkbox"/> 115200 ▾	<input type="checkbox"/>
UART1	<input type="checkbox"/> 115200 ▾	<input type="checkbox"/>
UART2	<input type="checkbox"/> 115200 ▾	<input checked="" type="checkbox"/>

Receiver

Serial(via UART) ▾ Receiver Mode

The UART for the receiver must be set to 'Serial Rx'(in the ports tab)
Select the correct data format from the drop-down,below

CRSF ▾ Serial Receiver Provider



Receiver (R-XSR):

Identifier	Configuration/MSP	Serial RX
USB VCP	<input checked="" type="checkbox"/> 115200 ▾	<input type="checkbox"/>
UART1	<input type="checkbox"/> 115200 ▾	<input type="checkbox"/>
UART2	<input type="checkbox"/> 115200 ▾	<input checked="" type="checkbox"/>

Receiver

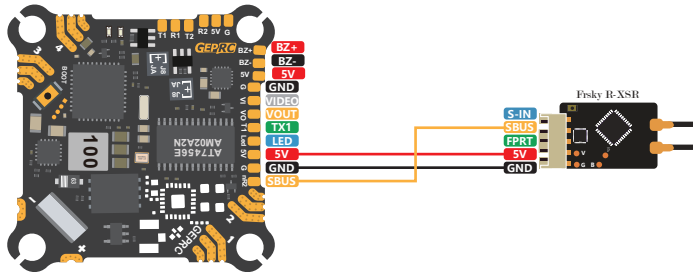
Serial(via UART) ▾

Receiver Mode

The UART for the receiver must be set to 'Serial Rx(in the ports tab)
Select the correct data format from the drop-down,below:

SBUS ▾

Serial Receiver Provider



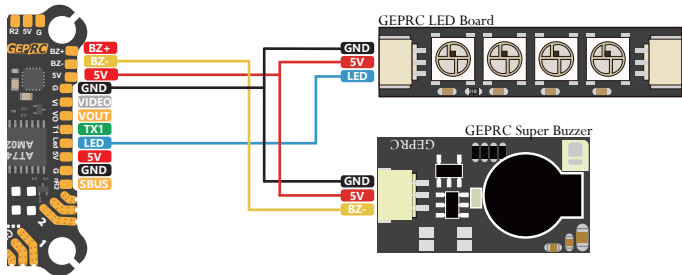
Buzzer & LED Board

Beeper Configuration

- TELEMETRY
- LED_STRIP
- DISPLAY

Other Features

- GYRO_CACIBRATED
- RX_LOST
- RX_LOST_LOADING
-



Includes:

1 x TAKER F411 12A AIO

1 x XT30-5.5CM-20AWG Power cable

1 x 35V220UF Capacitance

5 x Round head screws (M1.4X5)

8 x M2*6.5mm Damping rings

Contact:

Website: <http://geprc.com>

facebook

facebook.com/geprc



Official
website

www.geprc.com



Instagram

instagram.com/geprc



You Tube

youtube.com/geprc



Manual

geprc.com/support

